

# ANCHORING



**GFWA**

SUSTAINABLE TECHNOLOGY



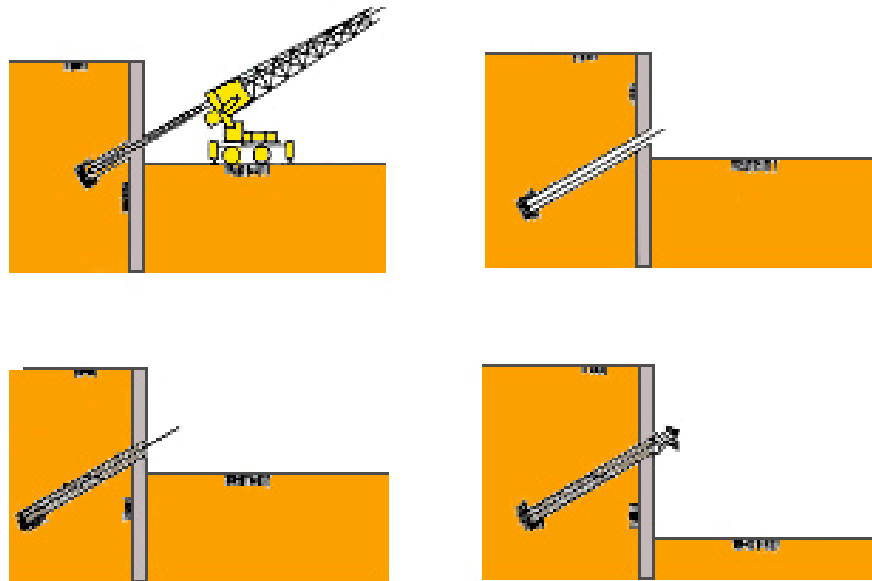
Anchoring is a very effective technique for stabilizing excavations and retaining structures, resisting uplift, tension and rotations.

In this technique initially a hole with a predetermined length is drilled into the ground and a high tensile steel tendon is placed in it. The bond length is grouted and will provide the system's necessary resistance. The free length is protected against corrosion, and the anchor is post tensioned as required.

Anchor length and spacing is specified during design and re-confirmed based on actual test results.



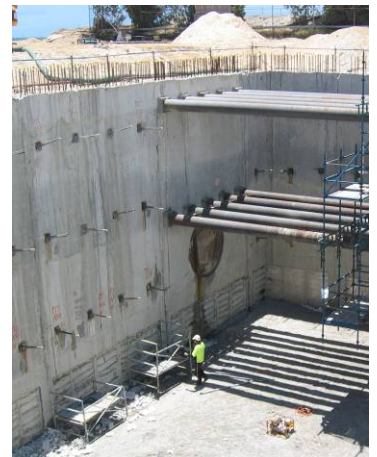
## Work procedure for Anchoring



## Some applications of Anchoring



- Foundations of structures
- Retaining structures
- Resisting uplift
- Resisting rotation
- Post tensioning
- Working in limited space and height



## Recent References

- Finucane Island Car Dumper (WA, Australia)
- 100 St. George's Terrace, Perth (WA, Australia)
- Applecross Residential Building (WA, Australia)
- Kwinana Desalination Plant (WA, Australia)
- Raffles Hotel (WA, Australia)
- Carlton Train Station (NSW, Australia)
- Burnley Tunnel, Melbourne (VIC, Australia)

## GFWA

Web: [www.gfwa.com.au](http://www.gfwa.com.au)

### PERTH

113 Radium Street  
Welshpool  
WA 6106  
Tel: +61 8 9350 5394  
Fax: +61 8 9358 3095

### SYDNEY

13-15 Lyonpark Road  
Macquarie Park  
NSW 2113  
Tel: +61 2 9491 7100  
Fax: +61 2 9491 7111

### BRISBANE

2/3 Harvton Street  
Stafford  
QLD 4053  
Tel: +61 7 3354 9100  
Fax: +61 7 3354 9111

### MELBOURNE

41 Boundary Road  
North Melbourne  
VIC 3051  
Tel: +61 3 9321 1333  
Fax: +61 3 9326 8996

### AUCKLAND

PO Box 72734  
Papakura  
Auckland NZ  
Tel: +64 9 236 3385  
Fax: +64 9 236 3385